

Enclosure for ElmScan OBD-II interfaces

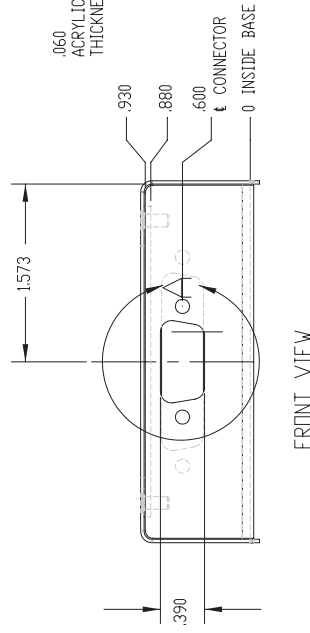
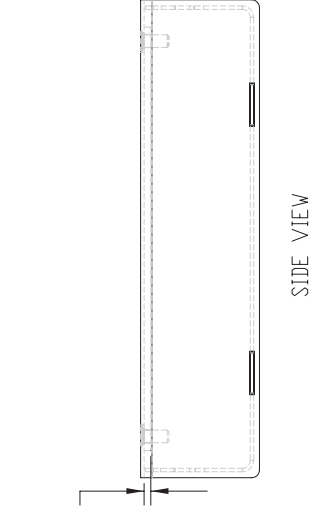
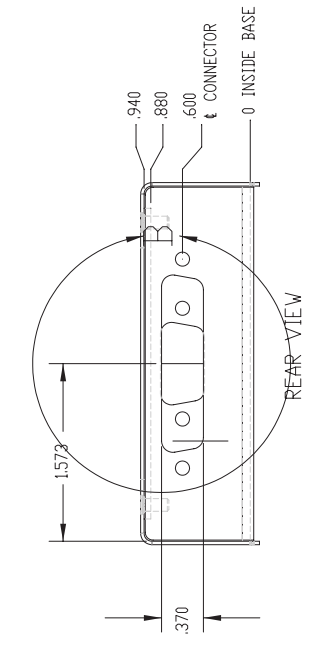
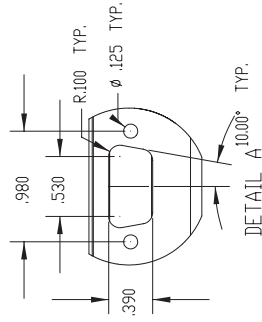
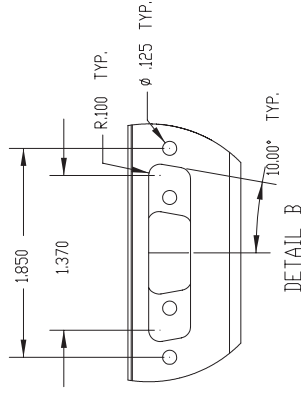
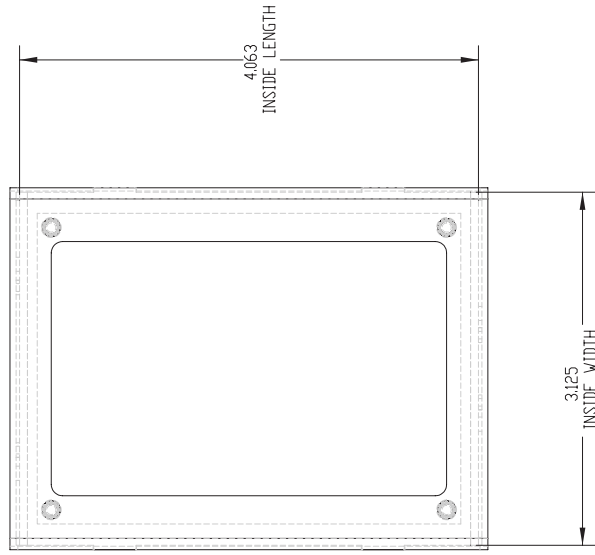
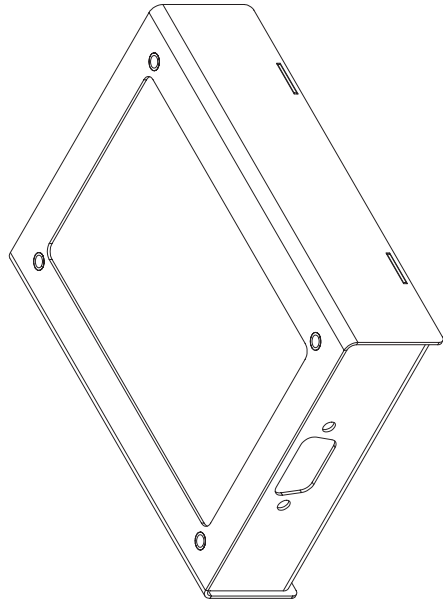
Material:	22 gauge plain steel
Finish:	matte black powder coat over phosphate
Inside dimensions:	3.125" x 4.063" x 0.940" (79.4 mm x 103.2 mm x 23.9 mm)
Weight:	4.4 oz (124 g)
Special features:	clear acrylic screen, cutouts for DB9 and DB25 connectors



The durable steel enclosure consists of two U-shaped pieces, and requires no connecting hardware. The PCB is mounted inside the enclosure using connector screws, and has a cutout in the top side, which is covered by a transparent acrylic screen. This setup allows for easy visual access to the status LEDs.

Made in Canada.

Technical Drawings



.060
ACRYLIC
THICKNESS

Example Application

