

# ElmScan 5 Compact Quick Start Guide



## 1 Install OBDwiz software



Point your browser to [scantool.net/setup-elmScan5/](http://scantool.net/setup-elmScan5/)

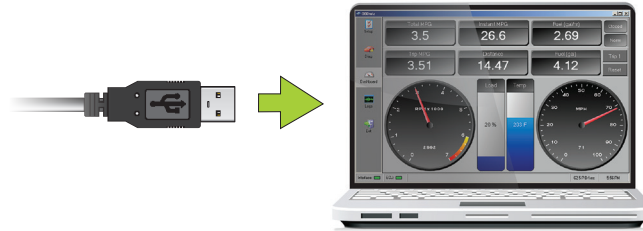
Download **"OBDwiz for Windows"**.  
Run the installer to set up the software.



OBDwiz for Windows

## 2 Connect ElmScan 5 to the PC

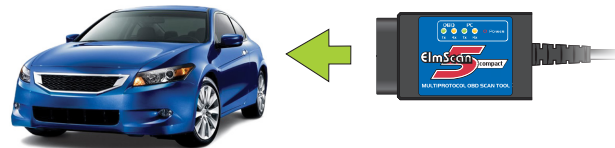
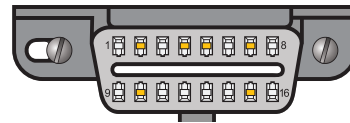
The **'Power'** LED will turn a dim **red** when you connect ElmScan 5 to the PC's USB port.



— Using Windows XP or Vista? Download the drivers at [scantool.net/setup-elmScan5/](http://scantool.net/setup-elmScan5/)

## 3 Plug ElmScan 5 into the OBD port

The OBD port is usually found on the driver's side, under the dash.



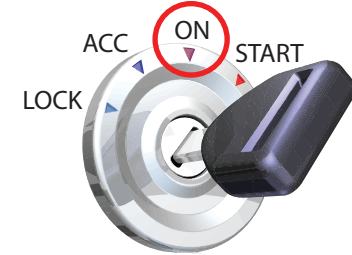
Can't find your OBD port?  
Visit [obdport.info](http://obdport.info)

## 4 Turn ignition to "Key On, Engine Off"

The red **'Power'** LED will increase in brightness and the **Tx/Rx** LEDs will cycle on and off from left to right.



**Vehicles with push button start:** press the button without stepping on the brake pedal.



— LEDs off? Check OBD port, auxiliary port, and the cigarette lighter for blown fuses.

## 5 Launch OBDwiz software

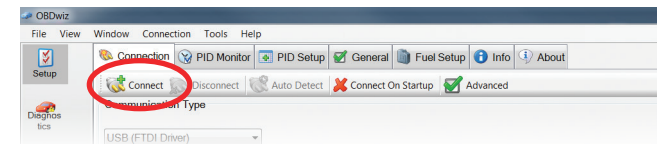
Click **Start** > **Programs** > **OBDwiz** > **OBDwiz**.  
When prompted, enter the license key.

**OBDwiz™ License Key**

## 6 Connect to your vehicle

Click the **'Connect'** button:

— Using Windows XP or Vista? Click **'Auto Detect'** first.



– Need help? Go to [ScanTool.net/forum](https://ScanTool.net/forum)  
or scan the QR code



Thank you for your purchase!

If you like ElmScan 5,  
please post your review on

**amazon.com**<sup>®</sup>