

OBDLink CI™ Quick Start

1. Install drivers

Insert the software CD in your CD-ROM drive. The scan tool selection menu will automatically appear. Click on the icon labeled "OBDLink CI":



If the menu does not appear, click "Start → Run", type `D:\setup.exe` (where *D* is the drive letter of your CD-ROM drive), and click OK.

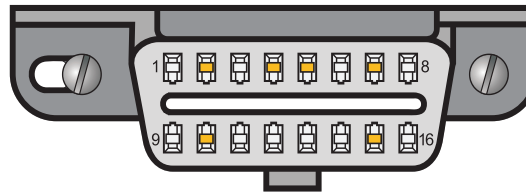
The software selection menu will appear. Click on the driver link for your operating system and follow the prompts to install the drivers:



2. Connect scan tool to the PC

Connect OBDLink CI to your PC's USB port using the USB cable (steps **A** & **B**).

3. Locate the diagnostic connector



The 16-pin D-shaped diagnostic link connector (DLC) should be located in the passenger or driver's compartment in the area bounded by the driver's end of the instrument panel to 300 mm (~1 ft) beyond the vehicle centerline, attached to the instrument panel and easy to access from the driver's seat. The preferred location is between the steering column and the vehicle centerline.

4. Connect scan tool to the DLC

Turn the vehicle's ignition to the Key On Engine Off position. Follow connection diagram (directly below) to connect OBDLink CI to the diagnostic connector using the OBD-II cable (steps **C** & **D**).

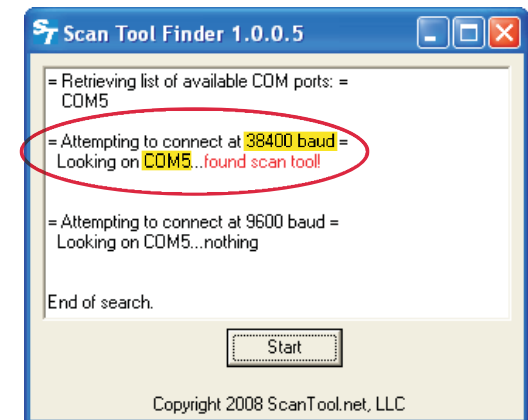
With step **D** completed, watch the LEDs as you are performing step **C**. The "STATUS" LED will change from red to yellow and the Tx/Rx LEDs will cycle on and off from left to right.

5. Identify the COM port

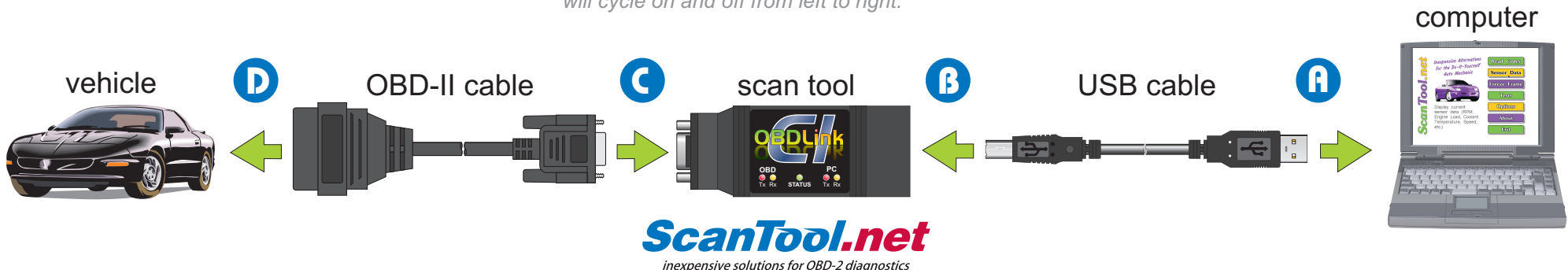
Click the "STN Finder" link:



The STN Finder dialog will appear. Click "Start" and record the COM port number and baud rate where a scan tool is found:



Continued on reverse side

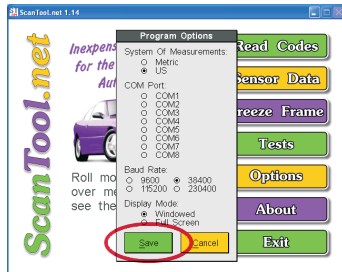


6. Install ScanTool.net software

Click on “ScanTool.net”, and follow the prompts to install the software:



After clicking the “Finish” button, the “Program Options” menu will appear. Select the COM port and baud rate you recorded in step 5, then click “Save”:



ScanTool.net v1.14 is now set up and ready for use.

Troubleshooting

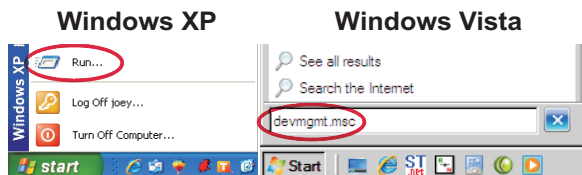
COM Port number is set higher than 8

Follow these instructions to reset your COM port number to a value between 1 and 8.

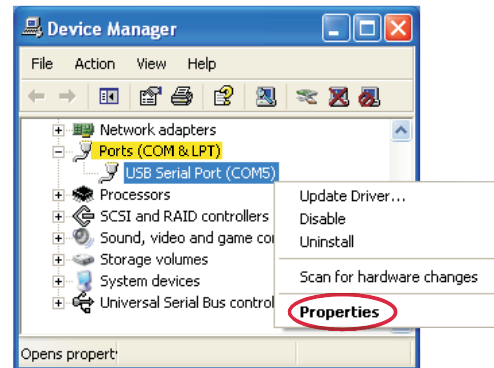
Click the “Start” button.

Windows XP users: click “Run...” then type “devmgmt.msc” in the Run box and press Enter.

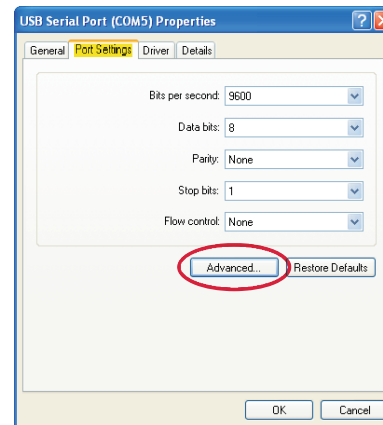
Windows Vista users: type “devmgmt.msc” in the search box and press Enter



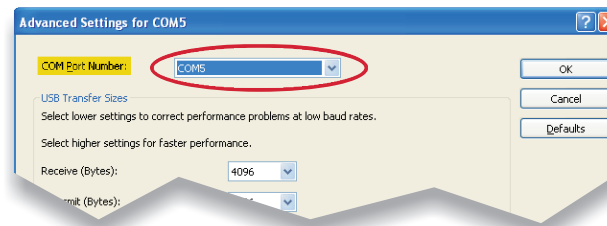
The Device Manager will appear. Under this view, expand “Ports (COM & LPT)” then **right-click** “USB Serial Port (COMx)” and click “Properties”:



The USB Serial Port (COMx) Properties dialog will appear. Click the “Port Settings” tab, then click the “Advanced...” button:



The “Advanced Settings for COMx” dialog will appear. Use the “COM Port Number” drop down box to select a COM port number between COM1 and COM8:



After changing the COM port, launch ScanTool.net v1.14, click the “Options” button and select the COM port.

To launch ScanTool.net v1.14 click “**Start** → **Programs** → **OBD-II Software** → **ScanTool.net** → **ScanTool.net v1.14 for Windows**”.

Technical support

Should you run into problems, technical support is just a click away:

- **Knowledgebase** - contains answers to the most commonly asked questions, general information about OBD-II, and troubleshooting information.
- **Forum** - allows you to share information and get support from other OBDLink CI users.

These resources can be accessed from our website: www.ScanTool.net