

Windows XP/Vista: Installing USB to Bluetooth Adapter

Introduction

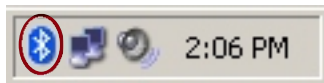
This manual explains how to install and configure the USB to Bluetooth adapter on your **Windows XP** or **Windows Vista** PC.

1. Plug in the Adapter

Plug the USB-to-Bluetooth Adapter into any available USB port. Windows will locate and install the drivers.

2. Set up the Bluetooth Connection

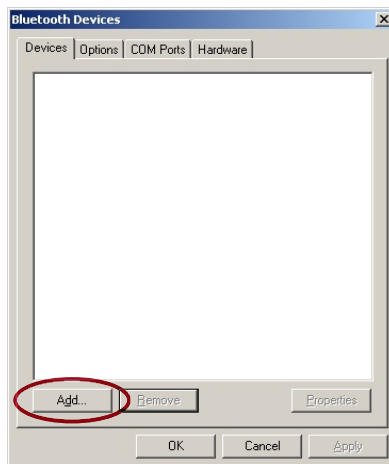
Locate the "Bluetooth Devices" icon in the system tray:



Double-click the icon.

If the icon does not appear in the system tray, remove and re-insert the USB-to-Bluetooth adapter.

The **Bluetooth Devices** window will appear:



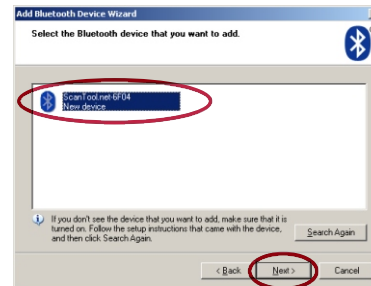
Click the **Add...** button.

The **Add Bluetooth Device Wizard** will appear:



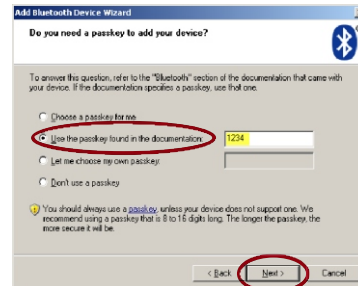
Check the **My Device is set up and ready to be found** check box, then click the **Next >** button.

The Wizard will search for and display Bluetooth devices within range:



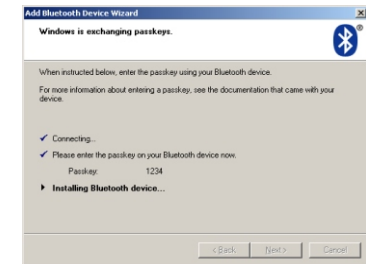
Click on the **ScanTool.net-XXXX** icon, then click the **Next >** button.

You will be asked to enter your passkey:



Select the **Use the passkey found in the documentation:** radio button. Enter **1234** in the text box then click **Next >**

The Wizard will connect to the scan tool, and exchange passkeys:



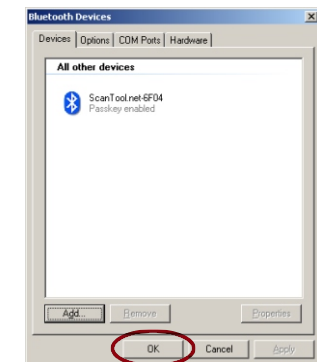
Once the passkeys are exchanged the wizard will display the COM port numbers:



Write down the number of the **outgoing** COM port, you may need it later to configure the diagnostic software.

Click **Finish**.

The wizard will close and you should see **ScanTool.net-XXXX** under the **All other devices** view:



Click **OK** to complete setup process.

Windows 7: Installing USB to Bluetooth Adapter

Introduction

This manual explains how to install the USB to Bluetooth adapter on your Windows 7 PC.

1. Introduction Plug in the Adapter

Plug the USB-to-Bluetooth Adapter into any available USB port. Windows will locate and install the drivers.

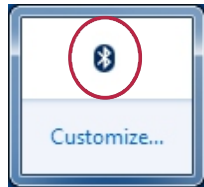
2. Set up the Bluetooth Connection

Locate the **Show hidden icons** arrow in the system tray:



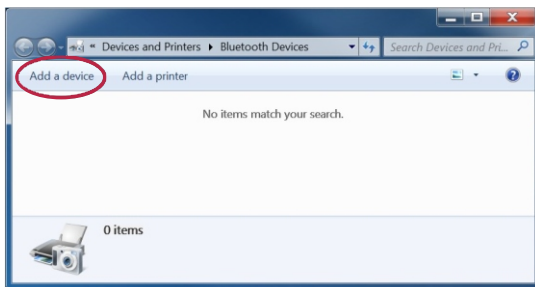
Click the icon.

The **Notification Area** will appear:



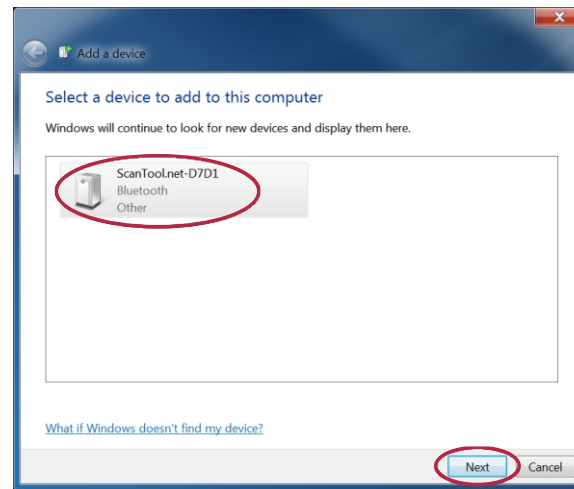
Double-click the Bluetooth icon.

The **Bluetooth Devices** window will appear:



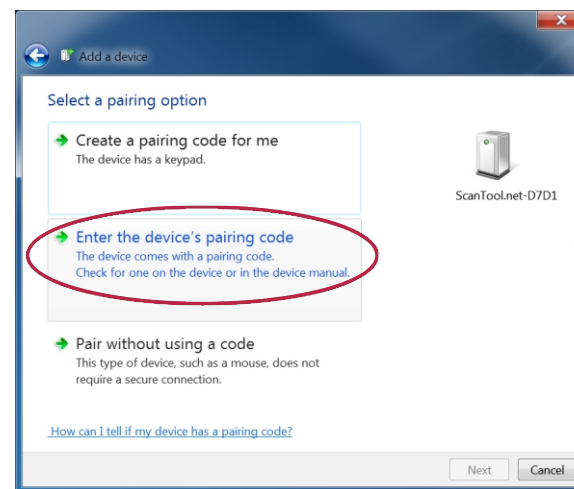
Click **Add a device**.

The **Select a device to add to this computer** dialog will appear:



Click on the **ScanTool.net-XXXX** icon, then click the **Next** button.

The **Select a pairing option** dialog will appear:



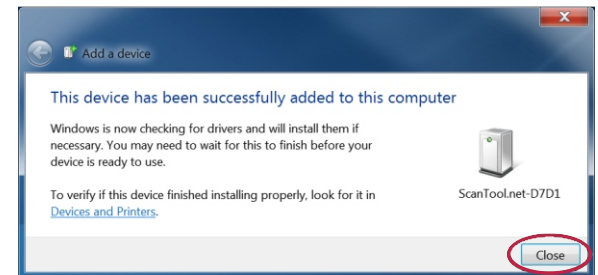
Click **Enter the device's pairing code**.

The **Enter the pairing code for the device** dialog will appear:

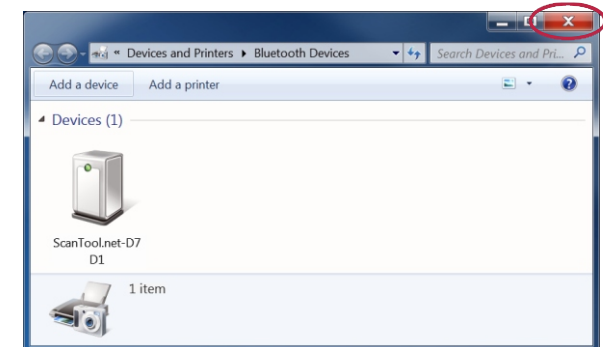


Enter **1234** into the text box then click the **Next** button.

The **This device has been successfully added to this computer** dialog will appear:



Click the **Close** button to complete the Add Bluetooth device process.



Click the **'X'** button to close the dialog.